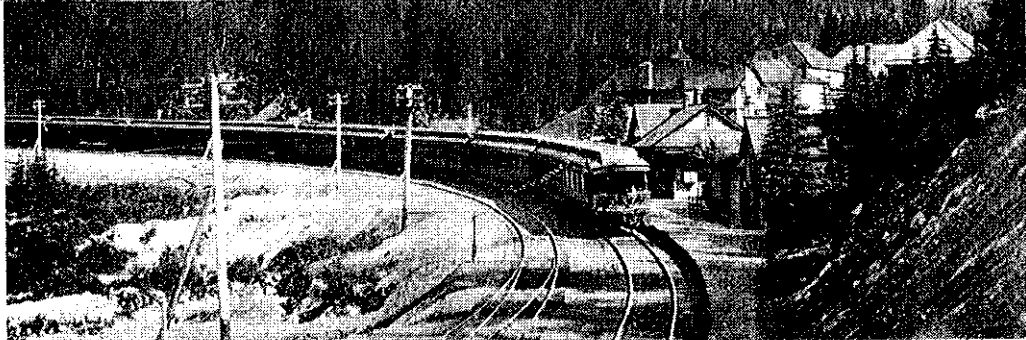


Seventh Division Bulletin Board



Official publication of the Seventh Division, Pacific Northwest Region,
National Model Railroad Association (Canada)

Seventh Division Standing Committee
--

Tom Beaton	596-6572	Greg Kennelly Superintendent	437-3499	Carol O'Dell Membership Coordinator	Dick Sutcliffe Publicity Coordinator	467-4301
Scott Calvert Events Coordinator	939-1849	Richard Starchuk Bulletin Board Editor	461-2765	Earl Ponsford Video Library	Gordon Varney Asst. Superintendent	421-5085
Brian Clogg Treasurer	588-2194	Hank Mekveld (Chilliwack)	792-0580	Steve Stark Director at large, Legal advisor	Vies Szalanski Workshop Coordinator	581-8937
Brian Morgan	438-9464	John Green Secretary	322-8990	John Moore	Doug Kelleway	594-7890
John Zuk Bulletin Board Co-editor	525-4004	Gordon Varney A. P. Chairman	421-5085		Honorary Life Member Fraser Wilson	298-4166

Interior Subdivision

Mike Barone (Fruitvale)	367-6134	Brian Freemantle (Nelson)	352-6649	Fred Olsen (Revelstoke)	837-4503	Phil Strange (Kamloops)	579-9834
Hugh Clarke (Vernon)	545-3900	Gary Hazell (Tappen) Interior Report	835-8628	Pat Quain (Vernon)	545-4774	Ken Vere (Grand Forks)	422-3193

Vancouver Island Subdivision

Ted Alexis (Victoria)	595-4070	John Fysh (Victoria)	598-8002	Ken Rutherford (Port Alberni)	724-4698	Grant Stephens (Nanaimo)	754-5982
Tony Van Bergen (Campbell River)	287-3951	Don Forsyth (Courteny)	338-6481				

The National Model Railroad Association (Canada) is a separately incorporated section of the National Model Railroad Association Inc. headquartered in Chattanooga, TN. NMRA (Canada) is presently a non-profit organization dedicated to preserving our railroad heritage through the promotion of model railroading, and by promoting and recognizing craftsmanship and service to others within the hobby.

President, NMRA Canada; Steven Stark (Vancouver, BC)
--

Bulletin Board Advertising

Advertising in the *Bulletin Board* is accepted at the following rates:

Full page:	\$48.00 per issue at 19.1 cm (7-1/2") by 25.1 cm (9-7/8").
Half page:	\$24.00 per issue at 19.1 cm (7-1/2") by 12.5 cm (4-7/8") or 9.2 cm (3-5/8") by 25.1 cm (9-7/8").
Quarter page:	\$12.00 per issue at 9.2 cm (3-5/8") by 12.5 cm (4-7/8").
Pike Ads:	\$4.00 for three issues at 6.4 cm (2-1/2") by 3.8 cm (1-1/2").
Buy/sell Ads:	\$5.00 per issue at 6.4 cm (2-1/2") by 3.8 cm (1-1/2") or 0.50 cents per line.

Camera-ready artwork **must** be supplied to fit within the image size shown above. Send your artwork and remittance, payable to PNR, NMRA, to John Zuk, 917 Queens Ave., New Westminster, B.C. V3M 1M1, prior to the closing date for the issue where the ad is to appear.

7th Division Bulletin Board

The *Bulletin Board* is published six times a year during February, April, June, August, October, and December by the 7th Division, Pacific Northwest Region, National Model Railroad Association Inc. The *Bulletin Board* is distributed to all Seventh Division Members in good standing.

Editorial opinions expressed herein do not necessarily reflect those of the Seventh Division Standing Committee.

Contributions of letters, articles, event news, plans, photographs, and art are welcome, and may be sent to:

Editor: the *Bulletin Board*

1114 Noons Creek Dr.,
Port Moody, BC
V3H 4A2
461-2765

Camera-ready Advertising
may be sent to:

Co-editor/Production

917 Queens Ave.,
New Westminster, BC
V3M 1M1
525-4004

The cutoff date for upcoming issues is the 12th of the month preceding publication.

All communications directed to the Division should be forwarded to the Superintendent. Memberships, renewals, and address changes must be sent to the membership coordinator.

The *Bulletin Board* is produced using Microsoft Word for Windows.

August Consist

Cover Photograph.....	3
The Editor comments.....	3
Interior Report	4
Railroad Notes.....	5
Skeena Valley Model RR Association.....	5
Video Report.....	6
Trains' 91 Report.....	7

Cover Photograph

These old turn of the century post cards show a CPR passenger train coming down the Big Hill into Field B.C., and views of Glacier Station on the old Rogers Pass CPR loop.

The Editor Comments

Richard Starchuk

Summer has come and gone... and come and gone... but your *Bulletin Board* staff are working away through sun and rain. The *Bulletin Board* is changing slowly into what I would like to see in a NMRA quality Division publication. This issue has various articles about many diverse areas in the hobby. Articles about old-time railroading, and information about some new trains-on-stamps for you closet stamp collectors will be included from time to time. Earl Ponsford who is the Video Library co-ordinator, will try to give you thumb-nail reviews of tapes in the Division's library in every issue. This issue also talks about the Skeena Valley Model R.R. Association's club layout. So keep those letters and photos coming in, we would like to see **your** layout in the *Bulletin Board*.

Victoria Model Railway Show

The Vancouver Island Sub-division of the PNR 7th Division is playing host to the Victoria Model Railway Show on Sept. 29th, 1991. It will be a one day event in the Princess Mary Restaurant, 344 harbour Road, Victory, BC. The Princess Mary Restaurant is located one block from the Johnson Street Bridge. Admission is \$2.00/person, \$5.00/family, and \$1.00/NMRA, Seniors, or children under 12. For more information, please contact:

David Tomljenovich Victoria Model Railway Show
c/o 7175 Hagan Road
Brentwood Bay, BC V0S 1A0

Interior Report July 10, 1991

by Gary Hazell

Since this is summer, most of us are out railfanning or attending the model railroad meets in Denver or Spokane. But, I thought it might be of interest to give you an update on the Nelson Electric Tramway Society.

The Nelson group, headed by President Mike Culham, has a very well constructed and almost completed HO scale layout using carrier controlled trains. As well as building a layout, he has been very busy over the past number of years, refurbishing street car #23, a single ended type.

Just over one year ago, this group embarked on a mammoth project to operate this streetcar in downtown Nelson. The appropriate planning, approvals, monies, grants, and City Hall's endorsement were received.

Construction of a point-to-point track plan with two loops was started last year, and it now 90% complete. The track is located down on the waterfront with one of the loops near a secondary airport serving private planes.

Volunteers from the City of Nelson, West Kootenay Power, CP Rail, and others have worked on the project. To date, the Society has spent over \$100,000.

When planning the location of this loop, the Society worked closely with Transport Canada and obtained the necessary approval in July of 1990. This was necessary due to the potential safety hazards, but none of the poles interfered with the dimensions of the predetermined flight envelope.

Even with Transport Canada's approval, the local aircraft pilots started a campaign to remove all the work by the airport citing safety concerns. They lobbied city council without consulting the Society, and on May 21st. 1991, council

passed a motion requiring the removal of two of the poles in spite of a recommendation by the City Administrator and legal council to paint stripes on the poles. The poles were removed, but this left the Society in dire straights!

Almost all of the volunteers have been lost due to the controversy.

The Society cannot get their final release of monies from the GOBC grant, and the local banks will no longer give credit to the Society.

The City of Nelson will not accept financial responsibility for the relocation of the loop even though the project has brought over \$900,000 into the local economy.

The Nelson Electric Tramway Society needs your help!!!

Become a member of the Nelson Electric Tramway Society. Financial donations are tax deductible and memberships only cost \$10.00 per year which includes their newsletter. Please write to:

Nelson Electric Tramway Society
c/o 123 View St.,
Nelson B.C. V1L 2V8

You can also write to the Nelson City council asking them to reconsider their motion of May 22nd 1991, and also ask them to reconsider their financial obligation and finance the relocation of the loop. Please write to:

Nelson City Council
City of Nelson,
502 Vernon St.,
Nelson, B.C. V1L 4E8

If you write, please send a copy of your letter to the Editor, Nelson Daily News, 266 Baker St, Nelson B.C. V1L 4H3.

Last but not least, the 1993 7th Division Spring Meet (Easter 93') will be in the West Kootenays in the Castlegar/Nelson area. If we of the 7th Division can help out in any way, maybe the

Trains 91 Registration Form

Name(s): _____

Address: _____

Postal Code: _____ Telephone: (____) _____

Full fare with banquet:	_____ @ \$37 = _____
Without banquet:	_____ @ \$15 = _____
Banquet only:	_____ @ \$22 = _____
TOTAL ENCLOSED:	_____
<i>Cheques payable to: Trains 91, 7th Division PNR</i>	

Rebates at show: \$5 for NMRA members and youths (under 19)

Mail this form to:

Registrar, Trains 91
1415 Venables Street
Vancouver, B.C.
V5L 2G1

Display Space:

Please check one of the following:

- I will require less than one table of display space.
- I will require more than one table and would like the display co-ordinator to contact me by telephone.

Best hour(s) and day(s) to reach me: _____

Name: _____ Phone: _____

- I do not plan to bring any display items.
-

Name: _____

Family Names: _____

Address: _____

City: _____

Prov./State: _____

Telephone: () _____

Make cheques payable to PNR, NMRA

Mail to:

Carol O'Dell

1415 Venables St.,

Vancouver, BC V5L 2G1

National Model Railroad Association

() Regular, One Year

\$24 (US funds)

Pacific Northwest RegionNMRA Membership Card No.
(if not applying for same now): _____

Expire date: _____

PNR Membership No. if renewing: _____

() Regular \$8.00/a (CDN)
 () Family 1.50/a per name
 () Associate (non-NMRA member) \$8.00/a

Total Canadian funds enclosed: \$ _____

() cheque () money order

7th Division Associate

Available to non-NMRA members for two years or until 21st birthday, whichever is longer. (Not a membership; provides *Bulletin Board* subscription and members' admission rates at Division functions only.) () \$10.00/year

7th Division Time Table

August 8 to 11, 1991	PNR Annual Regional Convention, Spokane, WA, USA.
August 21 to 24, 1991	National Narrow Gauge Convention, Seattle, WA, USA.
September 8, 1991	Monthly Workshop - Oakridge Auditorium, Project Layout, Operation.
September 29, 1991	1st. Annual Victoria model RR Show, Victoria, BC
October 13, 1991	Monthly Workshop - Oakridge Auditorium, Project Layout, Conclusion.
November 8 to 11, 1991	Trains' 91 Fall Meet & Public Show, Cameron Rec Center - Burnaby, BC.
December 8, 1991	Monthly Workshop - Oakridge Auditorium, Topic to be confirmed.

This may be your last issue of the Bulletin Board !

If your 7th Division membership has expired in June or July of this year and you haven't renewed, this will be your last issue of the Bulletin Board.

Please renew your membership using this form, and mail it in as soon as possible.

.....and while you're at it, why not register for Trains' 91 as well !

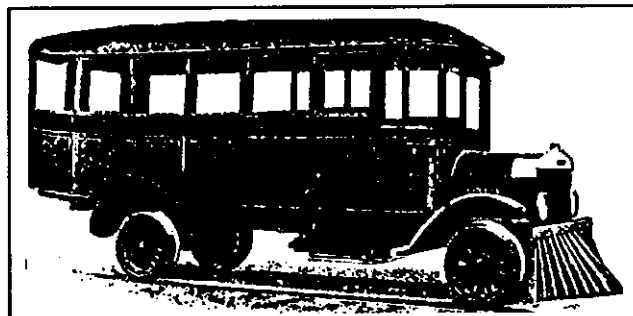
street cars and tramway will be one of the tours.

Railroad Notes

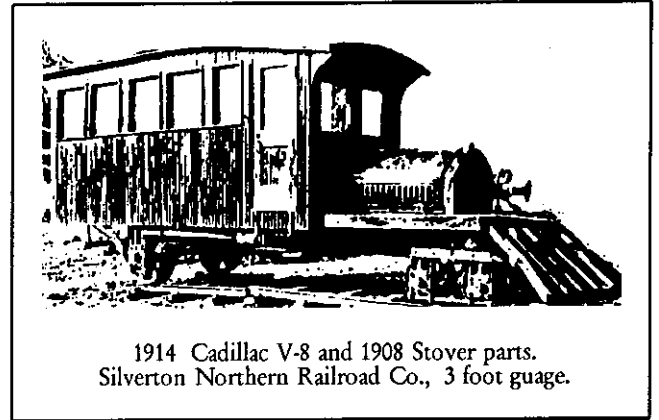
Research into railcars or rail motor cars turned up two examples that bore a familiar name: "Casey Jones", appended to two passenger-caring vehicles of a bygone age. They both resembled bus-type bodies except one was strictly a kitbash job of wood with a kitchen door attached to the front, but no screen door.

This model was built in 1914 by the sunnyside mining Co. for the Silverton northern Railroad Co. (3 foot ga) and powered by a Cadillac V-8 gas-mechanical drive. Parts of an earlier 1908 stover model were used to enhance its 18'-11" shape and it was reported on display at Silverton, Colorado, by Edmund Keilty in his excellent book 'The Short Line doodlebug, Galloping Geese and other Railcritters' (1988).

The second "Casey Jones" model was a trade name of the Northwestern Motor Co. of Eau Claire, Wisconsin (USA), and at least one such vehicle was turned out in 1922 for the Pacific Great Eastern Railway (BC Rail). It weighed two and a half tons, seated 22-passengers, and operated at a cost of \$14.50 per day as opposed to the steam passenger train it replaced at \$54.00 per day. A large 40-passenger version was advertised, but no confirmation of its existence has been recorded.



Northwestern Motor Co., Eau Claire, Wisconsin
Pacific Great Eastern Ry, British Columbia - 1922.
22 passengers



1914 Cadillac V-8 and 1908 Stover parts.
Silverton Northern Railroad Co., 3 foot gauge.

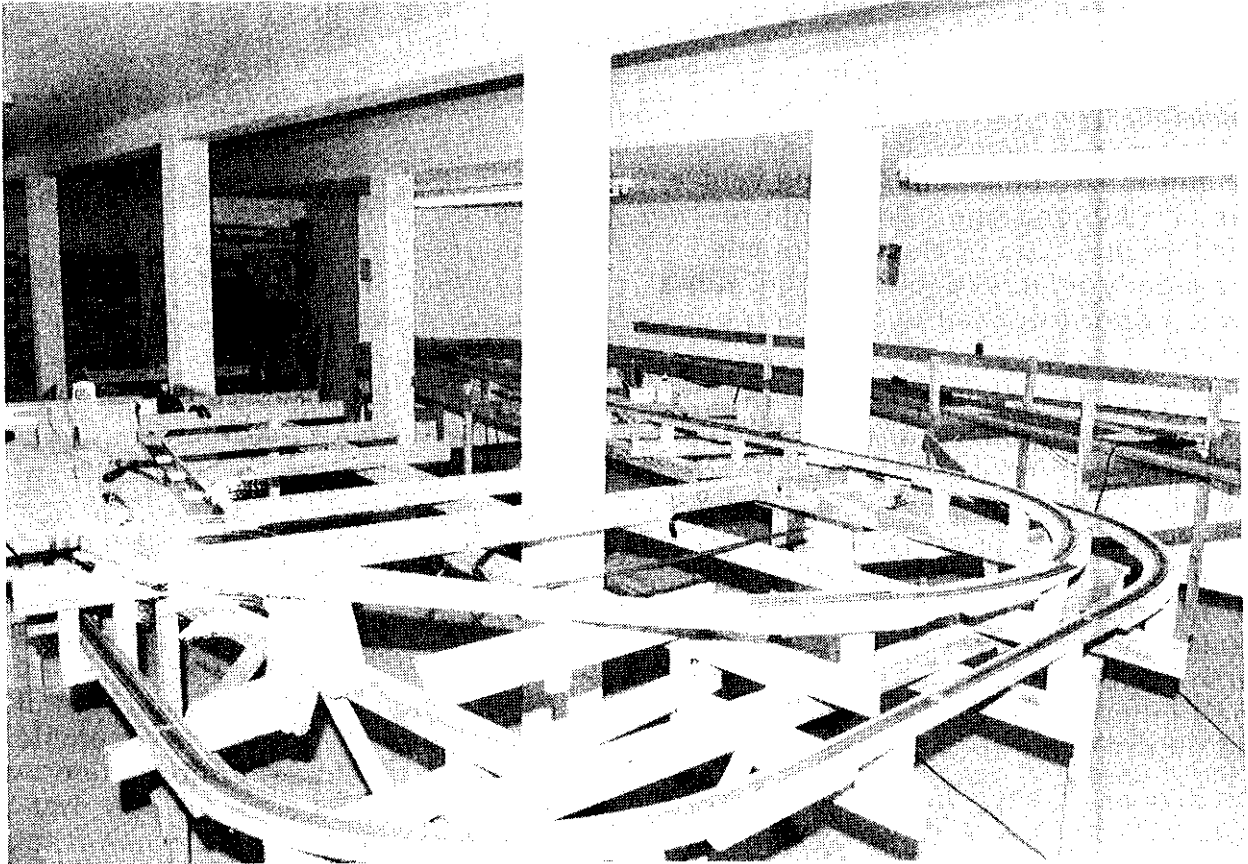
Off The Main Line Skeena Valley Model Railroad Association

The Skeena Valley Model Railroad is now open at its new clubhouse at 5010 Agar Avenue, Terrace, BC. For those not familiar with this layout, it is a joint building effort by 16 members and six students.

As shown in the photograph, the club is well on the way to having a complete HO scale layout. No information was supplied as to the layout size, but 36.6 metres (120 feet) of main-line track has been laid. One terminal, Rupert, is finished, and the other terminal, Smithers, is about 10% done. Kitimat Port, on a subdivision from Terrace, is connected by hand-laid track. The partly completed Hilltop Logging spur, originating at Carnaby, is also hand-laid track.

The Rupert terminal consists of five hidden staging tracks. It is provided with 12 optical-train detectors and nine remotely-operated turnouts. A reversing loop completes this part of the Rupert terminal.

Most of the turnouts will be hand-operated since electrical mechanical turnouts are so costly! Each of the three main lines will have hand-held throttles with controls and memory. This will allow the engineer to advance from plug-in to plug-in as the train moves along the track.



Skeena Valley Model Railroad

The Skeena Valley Model Railroad's first Open House was held in November of 1990, and attracted some 80 members of the public. The next Open House on June 1 1990, attracted the same number of people. But by that time, the club had a good deal of hardshell scenery to display, at Kitimat Port. The visitors could examine the supporting framework of extruded polystyrene and plastic flyscreen. The club prepared and ran five trains, two at a time for a full five hours.

On June 13th, some 15 kindergarten children from Veritas School, Terrace, visited the club for an hour. They had just completed a round trip via VIA Rail between Terrace and Kitwanga. A passenger train and a freight train provided entertainment for the children

during their visit. In this way, we will continue to keep our name before the public.

Video News and Views

By Earl Ponsford

If you would like to borrow video tapes, please contact me by mail at the following address:

Seventh Division Video Tapes,
C/O Earl Ponsford
450 Glencoe Drive,
Port Moody, BC, V3H 1G2

Telephone; 936-5653

All tapes are in the VHS format and are available for viewing at no charge to current member and associates of the 7th Div. in good standing. If you have

not borrowed from the library, here is how it works. Drop me a note listing your selections, and if available, they will be mailed to you post paid. Your only obligation is to return them on time in good condition, and with adequate postage (about \$3.00).

In this issue, I would like to give you a thumbnail sketch of tape #27.

Colorado's Narrow Gauge Railroads

An Award-winning Film

In this professionally narrated video program, you'll discover the sights, sounds, and history of Colorado's narrow gauge railroads. This includes trips on four of the most famous lines: the Durango & Silverton, the Cumbres & Toltec, the Georgetown Loop, and the Cripple Creek & Victor. As a special treat, vintage motion picture photography of these historic old trains has been included.

Colorado Railroad Museum

Here you can learn the amazing story of railroads in the Centennial State with a visit to the Colorado Railroad Museum in Golden, Colorado. See historic trains, photographs, artifacts, important record collections, timetables, maps, and much more.

Durango & Silverton Narrow Gauge Railroad

This scenic line follows the Animas River to Silverton through the spectacular forests and canyons of the San Juan Mountains

Cumbres & Toltec Scenic Railroad

Separate trains climb grades, traverse high trestles and puff their way through tunnels to rendezvous at Osier for lunch.

Georgetown Loop

Ride over an ingenious, incredibly high trestle loop at Devil's Gate - a loop which engineers designed to make the rail connection between the booming towns of Georgetown and Silver Plume.

Cripple Creek & Victor

In their heyday, several rail lines served these thriving mining communities. Today ride the 2'-0" gauge, industrial train over old grades and past historic sites.

Railroad Camp In and Corn Roast August 23 - 25, 1991

If you and yours are planning to be in the Interior during late August, the Salmon Arm Model Railroad Association cordially invite YOU and YOURS to a camp or motel weekend on sunny Shuswap Lake. We have reserved a special section of Glen Echo Resort from our good member, John Wayslow, for the weekend. Glen Echo Resort has a fantastic sandy beach right on CP Rail's Shuswap Sub. main line. This is guaranteed to give you ample train watching plus activities for the rest of the family. The motel has complete cooking facilities and is right across from the resort.

Bring Y O B, steaks and any other meals you will require, plus deck chairs, suntan lotion, and swim wear.

A donation will be collected so that we can get on with the planning. By mail our address is:

Railroad Camp In and Corn Roast
Box 1098, Salmon Arm, BC,
V1E 4P2

or by phone: Graham Redman at 832-6119, or Gary Hazell at 835-8628, or Al Wilson at 832-9566.

Trains 91' Report

By Scott Calvert

Plans for Western Canada's largest public model railroad show and fall meet are once again well underway. As the 7th Division's major activity for the year, Trains 91' will combine numerous enjoyable activities including workshops, contests, layout tours, a prototype tour, the huge public show, complete with modular layouts, awards, and

a banquet all occuring on November 8th through 11th, 1991.

For fall meet registrants, events will begin on Friday evening with several home layouts open for viewing.

On Saturday, a complete slate of meet activities will take place. This includes contests, display hall set up, workshops, videos, A.P. judging, plus the banquet with an entertaining, after dinner guest speaker.

Sunday will feature the large public show, giving us an opportunity to highlight the many exciting aspects of our hobby. Hours will be from 10:00 hours (10 AM) to 16:00 hours (4 PM). Monday will offer more home layout tours, a prototype tour (tentatively) and a 7th Division breakfast meeting.

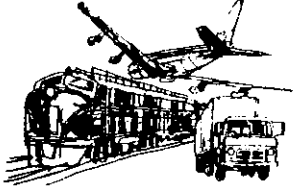
If you have not attended a previous Trains' meet, don't miss the opportunity to participate in this years show, and for you veterans, we're sure you won't be disappointed with Trains' 91. A registration form is enclosed in this issue as a pull-out. Watch for more reports in upcoming *Bulletin Board* issues.

As always, I'm most interested to hear from anyone wishing to take part in the show. Feel free to call me any evening at 939-1849.

(TB&N Shops)
Mann-Made Products
 1114 Noons Creek Dr., Port Moody, BC
 V3H 4A2

Supplying quality electronics and plastics for
 your railroad.

Are you on our mailing list? Send for our
 free catalog today.



HAL KINSEY

CENTRAL HOBBIES

2835 Grandview Highway
 Vancouver, B.C.
 Canada V5M 2E1

Phone (604) 431-0771
 Fax (604) 431-9855


...just arrived:
 major shipment of Athearn & MDC cars.

...new book:
 "Union Pacific-1990" by Withers Publishing.

...in stock:
 T-shirts from Micro-Trains.

...coming anytime now:
 Life-Like/Proto 2000 series FA2 & FB2 in C.P.
 and C.N.

...coming this fall:
 -from Athearn: RDCs, Hustlers, Trainmasters,
 & "Impack" spine cars.
 -from Overland: 1912 Type A Jordan
 Spreader believed to be used by C.P.



Gerry Lewis
 464-8633

WESTWOOD
 Hobbies & Crafts
 Westwood Mall
 135A - 3000 Lougheed Hwy.
 Coquitlam, B.C. V3B 1C5